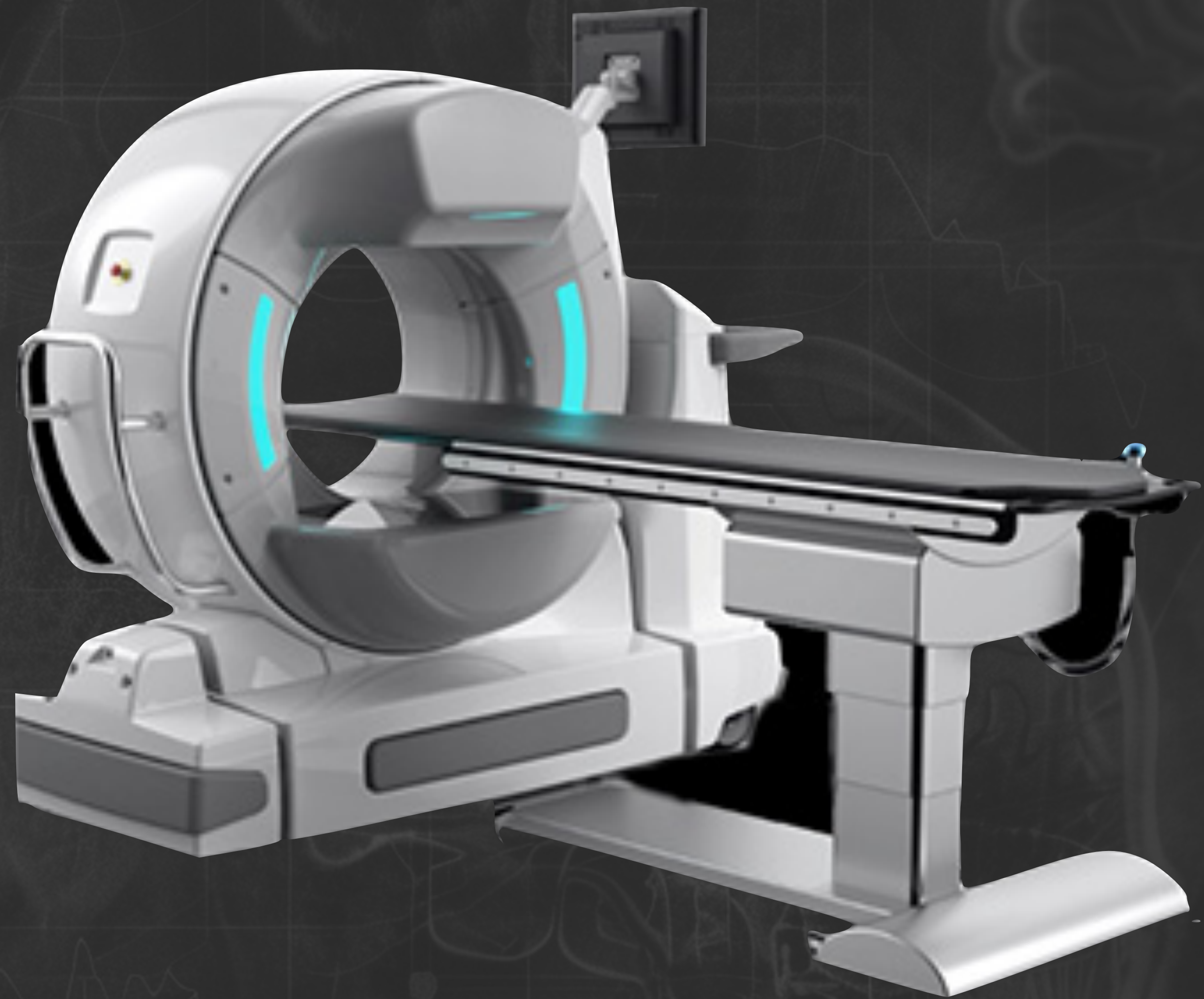



Advancing medical
imaging capabilities
for enhanced
patient care.



The background features a dark gray field with faint, light gray circuit board traces and a white pulse wave, resembling an ECG, running across the center.

We is a technology based health care company focused on research, development and commercialization of medical devices and bio pharmaceutical therapies that fundamentally change patient care and clinical outcomes.

We is introducing a new business model that unlocks new sources of revenue for our medical partners.

Imaging Services

- HDVI CT
- Fluoroscopy
- Digital Radiography
- Reporting

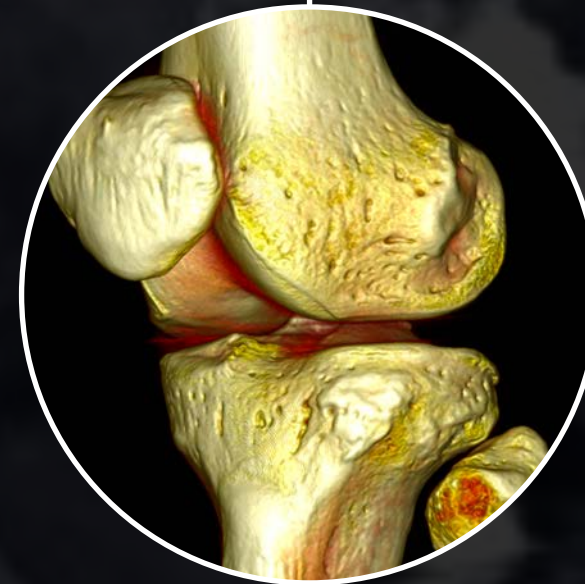
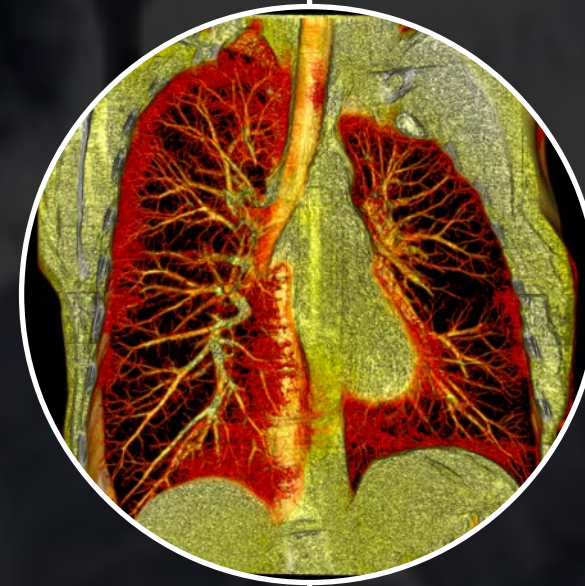
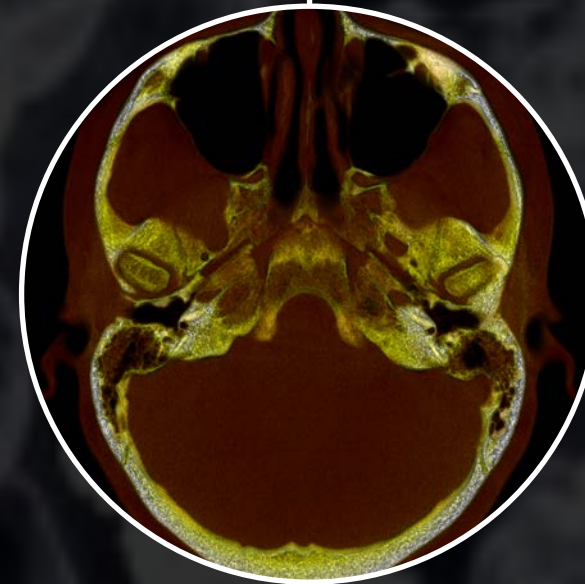


Image Quality

- The 360HD CT scanner has a 0.1 mm pixelated resolution scanner which is the first of its kind in the world.
- We have 94 International issued patents.
- All other scanners scan in slices not in pixels.
- They do not have real 3D data sets.
- Our scanner also simply plugs in the wall does not require dedicated HVAC, does not require dedicated 400-amp 3 phase power supply, and is completely portable.
- Our scanner also has one quarter of the radiation compared to traditional CT scanners on the market today.
- Combined with the 30 to 40 times enhanced Imaging quality in full 3d render able in any two-dimensional angle, with the portability and the usability in multiple spaces this is a disruptive imaging technology that will become the standard of care for medical imaging.

Patient Sources

- Personal Injury
- Share Care
- Imaging Referrals
- Self Referrals



Clinical Services

Personal Injury

- Diagnosis
- Treatments
 - Injections
 - PDD
 - Stemwave
 - ALIF/ACDF
 - Arthroscopy
 - Scar treatments

Pain

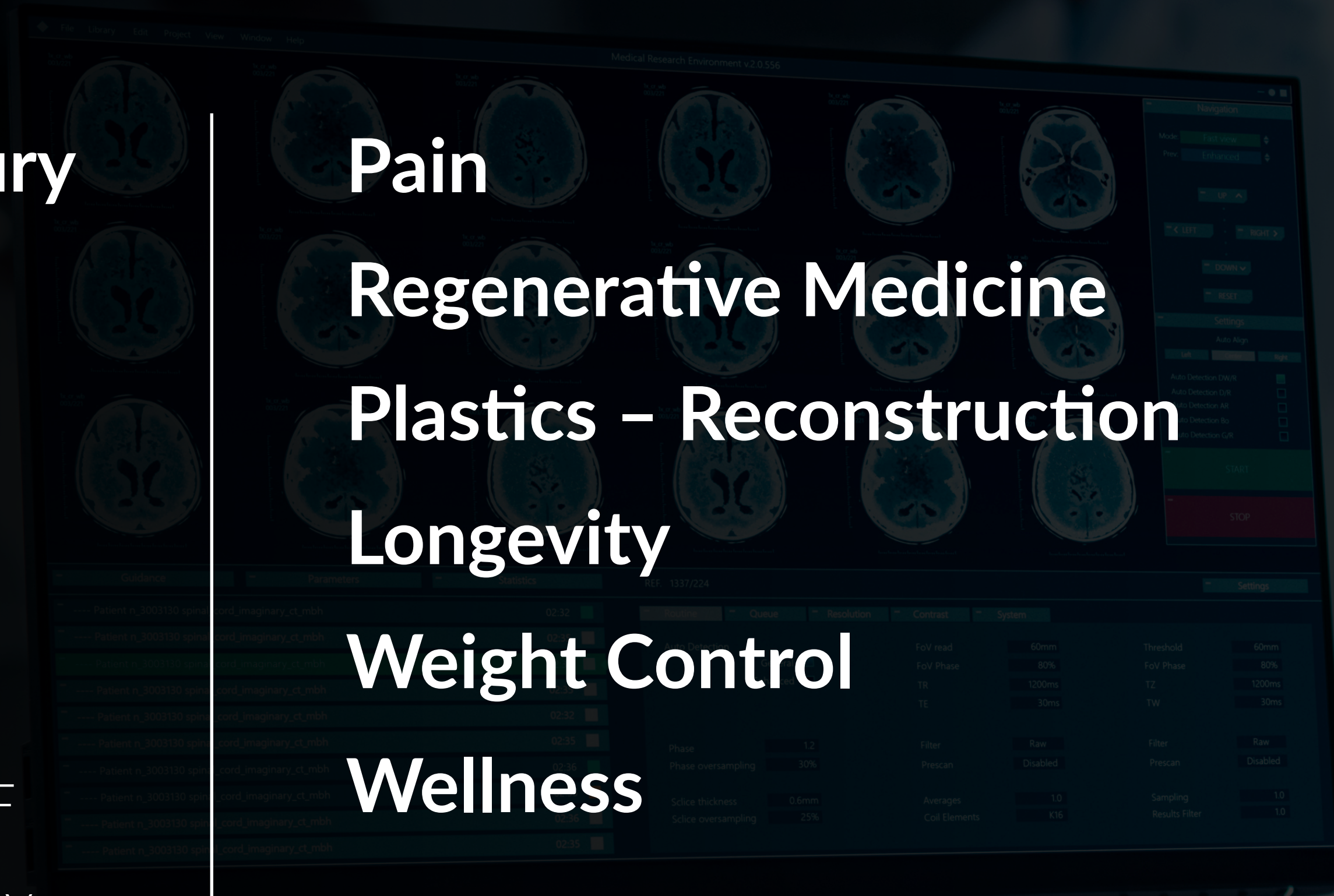
Regenerative Medicine

Plastics – Reconstruction

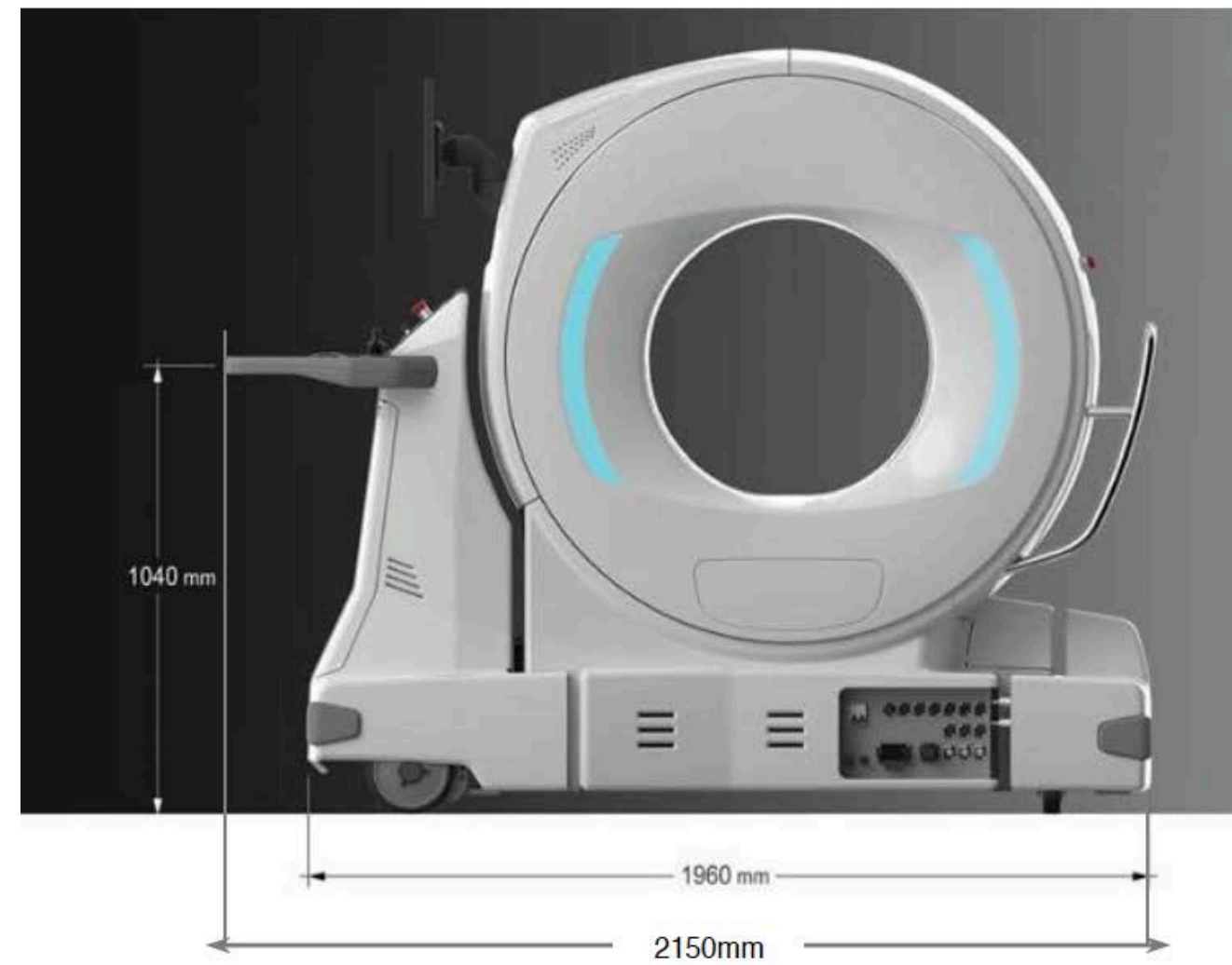
Longevity

Weight Control

Wellness



Size & Portability



One technician can easily move The 360HD CT Motorized imaging platform

Key Differentiators

IMAGE QUALITY

- High-definition volumetric imaging (HDVI)-Highest spatial resolution scanner in the world. 0.1mm 3D pixelated. Up to 40x more resolution than other scanners
- Regular CT & MRI scans are typically 3–4mm slices
- No data interpolation for the SeeFactor
- Regular CT & MRI's typically use interpolation i.e., Fabricated data.

PORTABILITY

- The 360HD CT plugs into the wall of a 30amp 240v single phase
- The 360HD CT can be handled by any staff member regardless of size
- Portable shrinks to less than 36" and is powered hence can bring scanner to patient rather than patient to scanner. Meaning we can scan open patients in the operation room or ICU or on a truck.

SPEED

- The 360HD CT scan and processing typically takes less than a minute
- Regular CT and MRI require multiple scans over a longer period typically 20 minutes to process a 3D rendering

RADIATION REDUCTION

- Reduced radiation exposure (due to pulse imaging) despite having better image quality. Only 25% of radiation exposure compared to normal CT.



COST REDUCTION

- Substantial capital cost reductions compared to regular CT
- Reduced capital infrastructure expense compared to regular CT does not require 3phase 400-amp power does not need dedicated HVAC to cool

COMPETITIVE ADVANTAGE

- Reduced claustrophobia, only 36" deep bore

MULTIMODALITY

- Digital Radiography (Xray)
- Fluoroscopy
- HDVI

